

**MORGAN
SINDALL**

CONSTRUCTION



Horsforth School

OVERVIEW OF PLANNING APPLICATION PROPOSALS

SCHEME INTRODUCTION

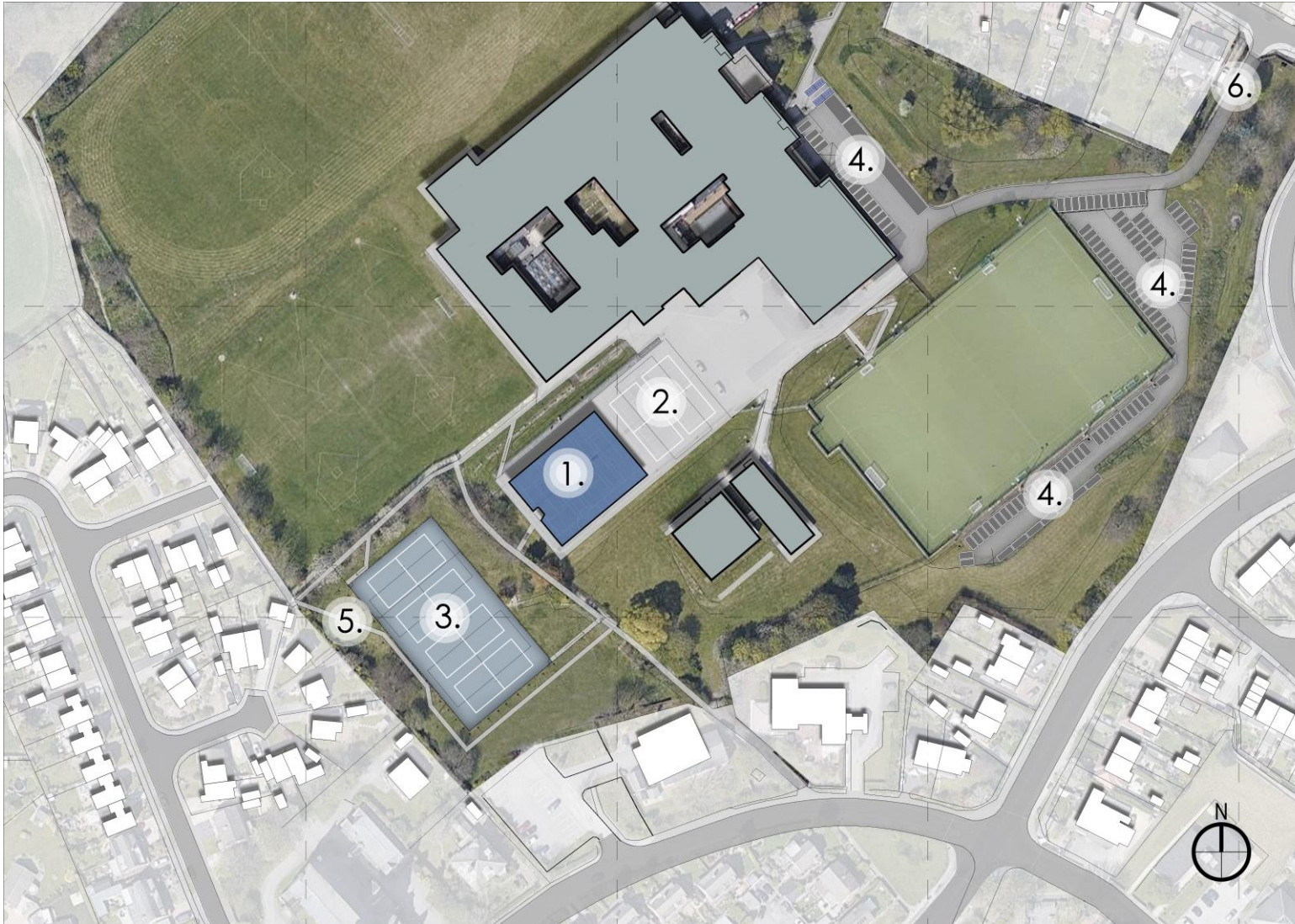
- We are excited to let you know that Horsforth School will shortly be submitting a planning application for a new building within the school grounds. Providing classrooms, science laboratories, computing suites, a library and a hall, the new building will help us to better deliver our curriculum and serve our anticipated growth in pupil numbers.
- Our anticipated growth will increase the size of the school from 1,400 pupils to 1,765 pupils (300 additional pupils in Years 7-11, and 65 additional Sixth Form pupils).
- There will be an associated equivalent increase in staff numbers from 144 full time equivalent staff to 164 FTE full time equivalent staff (an additional 20).
- Our planning application will include the following:
 - A modern new 2 storey building, located on part of the current tennis courts within the school grounds
 - A new set of 4 tennis courts on the land where the former Adult Training Centre was located (before it was demolished), and the relocation of the school boundary around these new courts
 - The diversion of the existing public footpath around the Adult Training Centre site, to avoid it cutting through the new school boundary in the future
 - 20 additional parking spaces within the school grounds, and the reconfiguration and improvement of some of the existing parking spaces.
- Our planning application will be submitted early in July 2020, and we hope to have planning permission in place in October 2020.

EXISTING SCHOOL SITE



1. Existing main school building
2. Former Adult Training Centre site (now demolished)
3. Existing Public Right of Way
4. Existing grass sports fields
5. Existing artificial pitch
6. Existing tennis (and netball) courts
7. Existing vehicle access
8. Existing parking areas

PROPOSED DEVELOPMENT TO BE INCLUDED IN THE PLANNING APPLICATION



1. New two-storey building (1,682sqm)
2. Partly retained tennis (and netball) courts
3. New tennis (and netball) courts
4. Revised parking layouts – improvements, reconfiguration and 20 new spaces
5. New route of the Public Right of Way
6. No change to vehicular access arrangements

NEW BUILDING - FRONT ELEVATION



VIEW FROM THE NEW TENNIS COURTS TOWARDS THE NEW BUILDING



VIEW OF THE SIDE ELEVATION OF THE NEW BUILDING



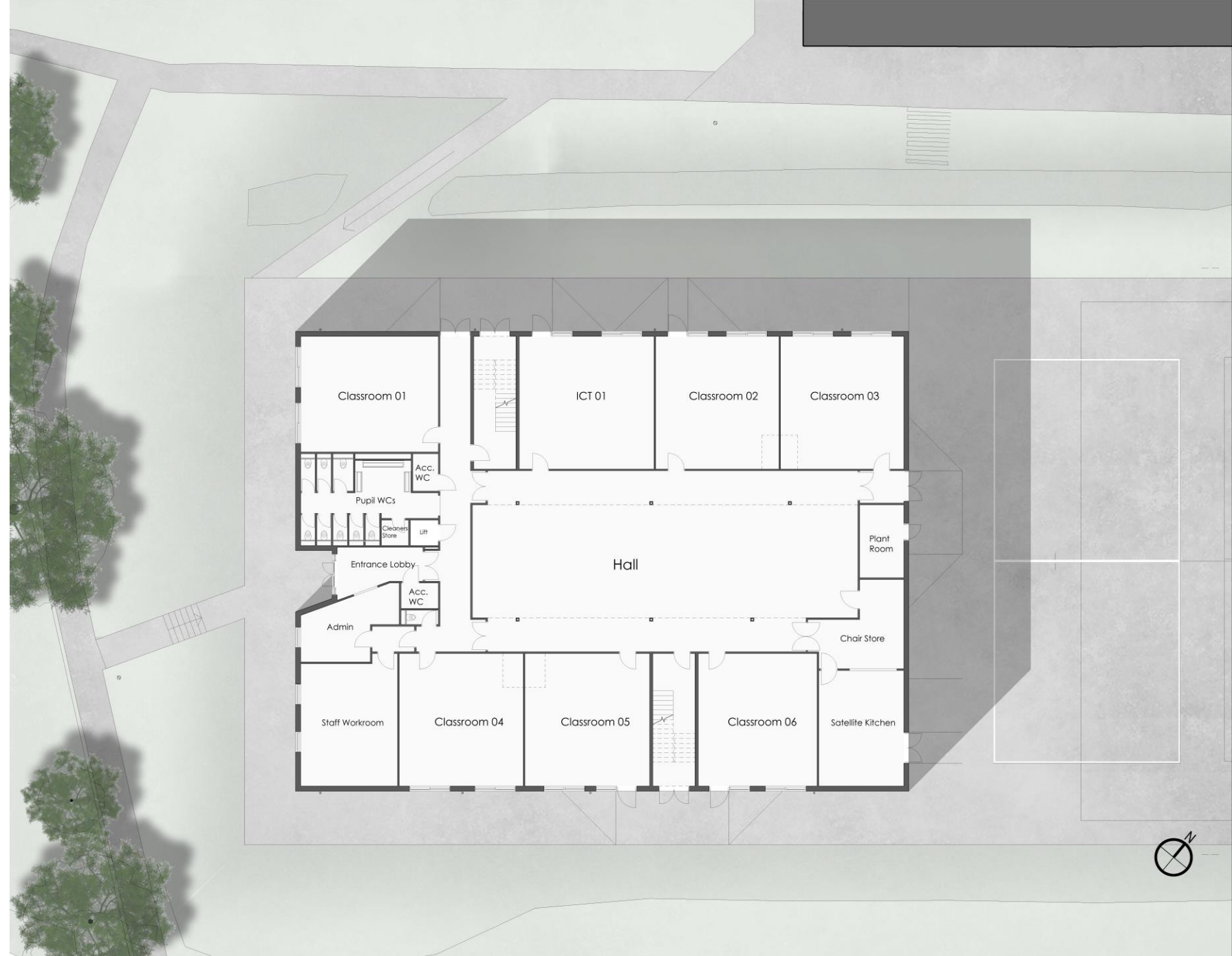
GROUND FLOOR PLAN

Teaching accommodation including classrooms and computing suite laid out around new central hall.

New staff administration facilities to serve the expansion.

Satellite kitchen arrangement providing additional dining facilities.

Gender neutral pupil WCs.



FIRST FLOOR PLAN

Teaching accommodation laid out around new central hall atrium.

4 new science laboratories, science prep room, computing suites and library at first floor.

Gender neutral pupil WCs.

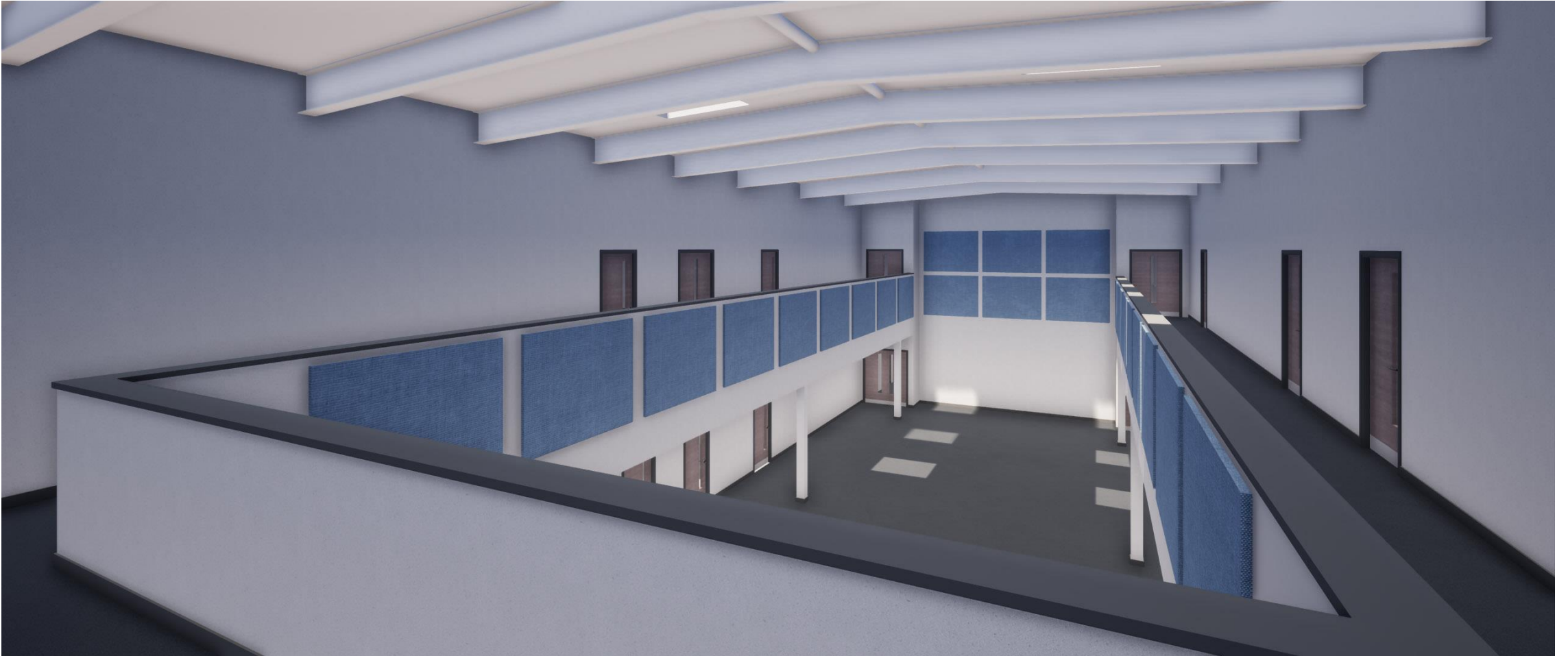
Lift access to first floor.



VIEW INTO THE MAIN HALL IN THE NEW BUILDING



VIEW FROM THE FIRST FLOOR BALCONY AROUND THE MAIN HALL IN THE NEW BUILDING



INDICATIVE VISUALS OF THE NEW TEACHING SPACES



CONTACT US

Email the Design Team at:

horsforthschool.uk@avisonyoung.com

Write to us:

Horsforth School,
Lee Lane East,
Horsforth,
Leeds,
LS18 5RF

Once the planning application has been submitted in the coming weeks it will be available to view and comment on online via Leeds City Council's Planning Portal.

<https://publicaccess.leeds.gov.uk/online-applications/>